



**We are Fliegl.**

Tanks and slurry technology

  [www.fliegl.com](http://www.fliegl.com)



► **Fliegl Agrartechnik GmbH**  
Bürgermeister-Boch-Str. 1  
D-84453 Mühldorf a. Inn, Germany  
Tel.: +49 (0) 86 31 307-0  
Fax: +49 (0) 86 31 307-550  
e-Mail: [info@fliegl.com](mailto:info@fliegl.com)

**We are Fliegl.**

Dimensions, weights, and technical data are subject to change.  
Some illustrations show special equipment.  
Slurry technology 11/2017

   [www.fliegl.com](http://www.fliegl.com)

# Innovative by tradition

The name Fliegl has a decades-long reputation for quality, innovative action and practical solutions for agriculture. These are advantages which have made Fliegl, for example, the No.1 in Europe for agricultural trailers. Whether it's about a tipper, an original push-off trailer, slurry technology or harvest logistics: Fliegl will always have the optimum concept for you.



## Innovative, top-quality products

Just because an idea is new, it doesn't necessarily mean that it's a good one. At Fliegl, we rigorously check every single product. We know the demands of the market and we are in constant contact with the practitioners. Our engineers and designers use the very latest CAD systems to develop products that are consistent down to the last detail and provide clear practical benefits. Innovations from Fliegl Agrartechnik are always concrete solutions for real tasks.

## German quality in action worldwide

Despite globalisation, Fliegl has consistently developed and produced in Germany, and one reason for this is our trained and qualified staff. From engineers to apprentices, we look for skills that we can develop through continuous education and training. Another factor is the high technical standard in Germany, which provides the ideal conditions for developing our ideas into the high-quality products expected of the Fliegl brand.



www.fliegl.com



# Vacuum tank VFW

Volume: 3,000 L to 30,000 L

Ideal for powerful slurry application

- + Impervious to high proportions of foreign objects
- + Can be combined with any Fliegl slurry spreader
- + Suitable for almost any substrate, as well as water

Overpressure valve 0.5 bar



Additional siphon

Hydraulic compressor changeover



Suction nozzle for comfortable suction - on left or right



Turbo filler on left or right side possible



Hydraulic filling dome (400 mm or 600 mm)



Mechanical filling dome Ø 400 mm



Hydraulic internal agitator with paddle screw for optimum homogenisation of the slurry (recommended for pig manure)



Discharge accelerator with or without shredding cutter

✓ Standard equipment    ⚙ Optional

## Compressors available with the widest variety of power levels

The compressor is lubricated fully automatically by a drip oiler.

Baltioni MEC II 11,000 L heat-resistant



Baltioni Ballast 13,500 L heat-resistant

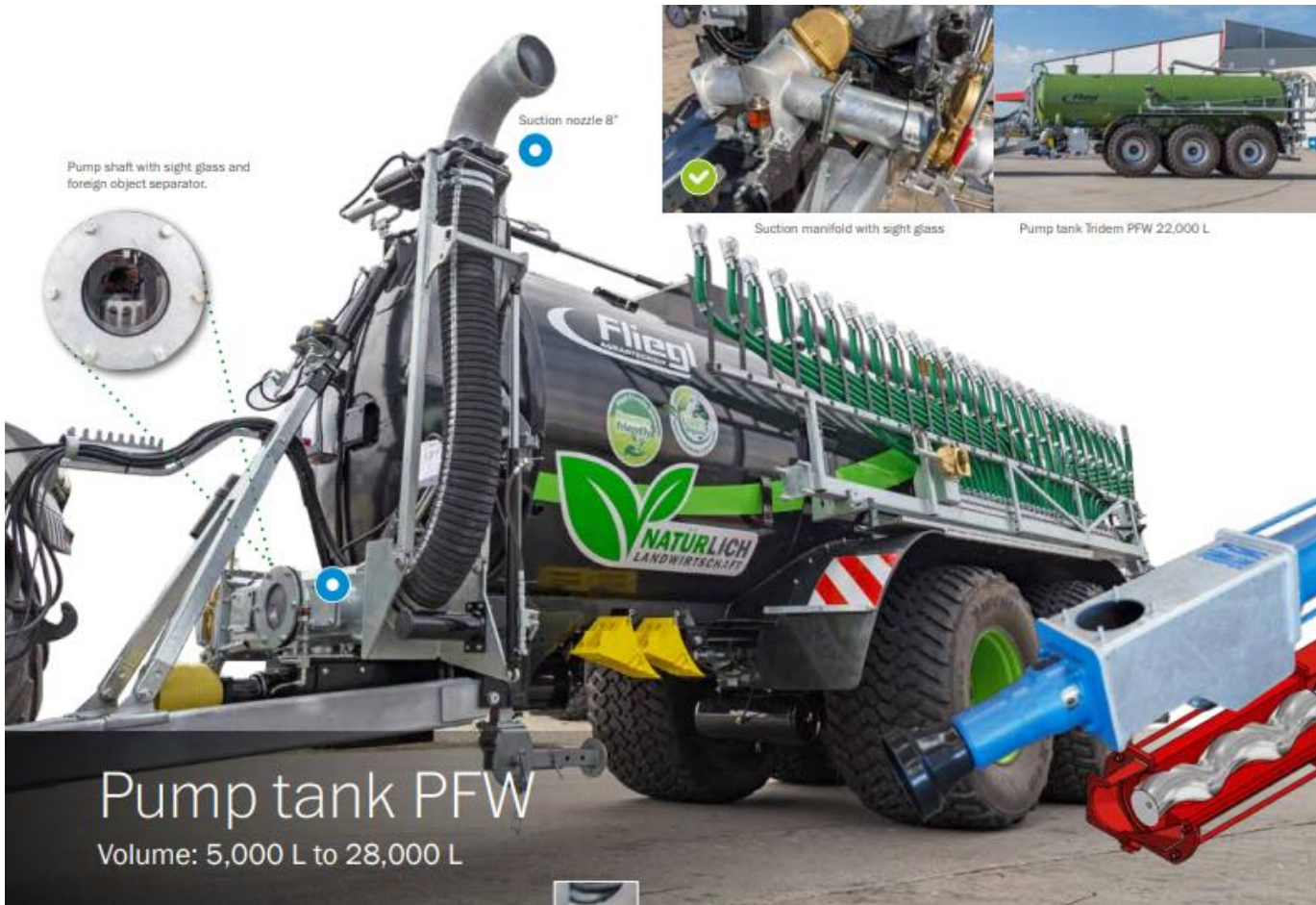


Hertell 10,000 L heat-resistant



Hertell 14,000 L water-cooled and heat-resistant





Pump shaft with sight glass and foreign object separator.

Suction nozzle 8"



Suction manifold with sight glass

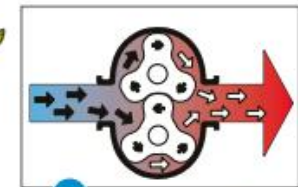
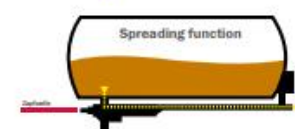
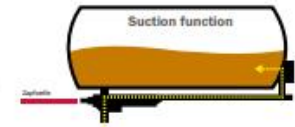
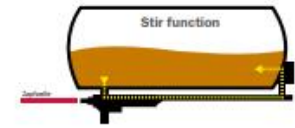
Pump tank Tridem PFW 22,000 L

# Pump tank PFW

Volume: 5,000 L to 28,000 L

## Eccentric screw pump, 4,000 or 6,000 litre

The eccentric screw pump ensures pulsation-free flow. The auger-type rotor has no trouble in delivering even very thick slurries at high flow rates and high pressure, so even deep slurry pits are not a problem for this pump. The pump is connected to the rear or front of the tank, pumping slurry in at the rear and out from the front. The 3-way gate slider is used to switch between filling or emptying, or mixing inside the tank.



Rotary piston pump  
Equipment picture: Vogelwang GmbH & Co. KG, 49632 Essen/Dtld.



Control panel for tank + distributor

Automatic pump shut-off

Tapered three-way gate slider with mechanical flow adjustment

Hydraulic push cover

- + High suction and spreading power
- + Can be combined with any Fliegl slurry spreader
- + Linear flow during the spreading process with the same PTO shaft speed

✔ Standard equipment ● Optional

Perfect technology for high power suction and spreading

# High pressure tank HFW

Volume: 5,000 L to 25,000 L

The ideal solution for farms with external filling

+ High flow rates

+ Low maintenance with long running times

Centrifugal pump 6,500 L/min.



Hydraulic push cover



Also available with the "Titan", "Gigant Plus" and "Gigant" tandem assemblies



Sprinkler nozzle



Rinsing line (stir function)

✔ Standard equipment    ○ Optional

# Poly-Line tanker

Volume: 6,000 L to 18,500 L

Available as pump, high-pressure or transport tank

+ GFK tank – Made in Germany

+ Easy to clean

+ Extremely low centre of gravity



Mounting bracket for drag shoe spreader and four-point hydraulics



PFW 9000 with Skate 90 drag shoe spreader



PFW 18.500 with SKATE 210 drag shoe spreader



PolyLine available in numerous equipment variants, e.g. with telescopic axle

- Ground pressure shifting
- Extremely high stability on slopes



Boogie SB floating assembly with 18,500 L



High-pressure tank HPW 15.500 with centrifugal pump and sprinkler nozzle

# A show of strength

## AGRO TRUCK tanker trailer

25,000 l or 27,500 l

- Volume 25,000 l or 27,500 l
- Two-axle version
- Air suspension
- Steering axle with automatic locking
- 60 km/h version with EBS
- Vacuum or pump version
- Rear docking
- Suction nozzle 8"
- Internal agitator pneumatic or hydraulic
- Electromagnetic control
- Filling dome D600 mm

+ Ideal for combined transport

+ Suction and filling possible with one vehicle

Tank mounting for hook lift



Two-axle PolyLine transport tanker



Two-axle transport tanker TFW 16,000

Tanker trailer - ideal for road transport



### Tanker trailer STF 25,000 l and 27,500l

- Volume 25,000 l or 27,500 l
- Two-axle or three-axle version
- Air suspension
- Steering axle with automatic locking
- 40 - 60 or 80 km/h version
- Vacuum or pump version
- Filling dome D600 mm
- Rear docking
- Suction nozzle 8"
- Internal agitator pneumatic or hydraulic
- Electromagnetic control

# The various SERIES - with a big equipment plus!

A tank to suit any requirement



## JUMBO Line

Jumbo Line tanks are specially designed for farms where there are steep slopes. These tanks are distinguished by their particularly low centre of gravity, from 5,000L with offset axle as standard!

## JUMBO Turbo Line

Jumbo Turbo Line tanks differ from the Jumbo Line tanks in that they have an additional centrifugal pump. Thanks to the combination of compressor and centrifugal pump, a hydraulically swivelling sprinkler nozzle can be mounted as an option. So even slurry can be spread even on steep slopes that are difficult to negotiate.

## MAXX Line

Maxx Line tanks have customised equipment and they are distinguished by their robust design. Suitable equipment variants can be selected for the widest range of applications and regions.

## MAXX Line PLUS

MAXX Line Plus tanks are impressive with their high power and extensive basic equipment. With their standard 750/60-R30.5 tyres, these tanks are gentle on the land. Practicality and efficiency were of particular importance to us when developing this tank line!

## ALPHA Line

Alpha Line tankers not only provide special operating and ride comfort, they are also especially distinguished by their extensive basic equipment which uses the very latest technology. These tanks were designed for professional and intensive applications and can be fitted with the widest variety of additional options!

VACUUM

VACUUM

PUMP &  
VACUUM

PUMP &  
VACUUM

PUMP &  
VACUUM

# Fliegl Line





# Vacuum tank Jumbo Line

Volume: 3,000 L to 8,600 L

Jumbo Turbo Line	Tank length (shell)	Tank diameter
VFW 3,000	3,000 mm	1,100 mm
VFW 4,000	3,000 mm	1,250 mm
VFW 5,000	3,000 mm	1,400 mm
VFW 6,200	4,000 mm	1,400 mm
VFW 7,500	4,000 mm	1,500 mm
VFW 8,600	4,000 mm	1,600 mm

## READY FOR ANY CHALLENGE!

- Top or bottom hitch
- Various brake systems
- Various drawbar eyes
- Different speed versions
- Different tyre variants
- Different compressor variants
- Various slurry distributors
- Ladder
- Turbo filler
- Suction nozzle 6" with docking station
- Turbo filler with 6" suction nozzle
- Pneumatic internal agitator
- Hydraulic compressor changeover

Filling dome D400 mechanical or hydraulic available



Blind rear flange and pre-fitted for downhill emptying

Mounting bracket for drag hose or drag shoe spreader STANDARD starting from 5000l

Downhill emptying (with internal pipe)

With offset axle starting from 5000 L: Low centre of gravity ensures optimal handling on slopes

Silencer with oil separator

Ideal for farms where there are very steep slopes

✓ Standard equipment    ● Optional

# Vacuum tank Jumbo Turbo Line

Volume: 3,000 L to 8,600 L

Jumbo Turbo Line	Tank length (shell)	Tank diameter
VFW 3,000	3,000 mm	1,100 mm
VFW 4,000	3,000 mm	1,250 mm
VFW 5,000	3,000 mm	1,400 mm
VFW 6,200	4,000 mm	1,400 mm
VFW 7,500	4,000 mm	1,500 mm
VFW 8,600	4,000 mm	1,600 mm

## READY FOR ANY CHALLENGE!

- Suction nozzle 6" with docking system
- Turbo filler with 6" suction nozzle and docking system
- Turbo filler
- Pneumatic internal agitator
- Compressor and centrifugal pump with hydraulic changeover
- Ladder
- Top or bottom hitch
- Various brake systems
- Various drawbar eyes
- Different speed versions
- Different tyre variants
- Various slurry distributors
- B-connection with manual slider



Filling dome D400 mechanical or hydraulic possible



Impact head spreader over centrifugal pump



Mounting bracket for drag hose or drag shoe spreader STANDARD starting from 5000L



Downhill emptying



Turbo filler



With offset axle starting from 5000 L: Low centre of gravity ensures optimal handling on slopes



Hydraulic sprinkler nozzle

### Compressor and centrifugal pump combination

Compressor 5000 L with centrifugal pump 3500 L up to 4000L tank

Compressor 8000 L with centrifugal pump 6500 L starting from 5000L tank



Tank tipping cylinder with drop support leg starting from 5000L

Ideal for very steep slopes with its sprinkler nozzle

✔ Standard equipment    ● Optional

# Vacuum or pump tank "MAXX Line"

Volume: 5,000 L to 25,000 L

## OPTIONAL FOR PFW/VFW

- Four-point hydraulics
- Discharge accelerator
- 5 or 6 way control blocks



Drawbar suspension and B suction nozzle



Turbo filter with quick coupler



For pump tank: Hydraulic push cover

MAXX Line	Axes	Tank length (shell)	Tank Ø
VFW 5,000	1	3,000 mm	1,400 mm
VFW/PFW 6,200	1	4,000 mm	1,400 mm
VFW/PFW 7,500	1	4,000 mm	1,500 mm
VFW/PFW 8,600	1	4,000 mm	1,600 mm
VFW/PFW 10,600	1	5,000 mm	1,600 mm
VFW/PFW 8,600	2	4,000 mm	1,600 mm
VFW/PFW 10,600	2	5,000 mm	1,600 mm
VFW/PFW 12,000	2	5,000 mm	1,700 mm
VFW/PFW 14,000	2	6,000 mm	1,700 mm
VFW/PFW 16,000	2	6,000 mm	1,800 mm
VFW/PFW 18,000	2	6,000 mm	1,900 mm
VFW/PFW 20,000	3	7,000 mm	1,900 mm
VFW/PFW 25,000	3	7,500 mm	1,900 mm

"Titan" axle assembly up to MAXX Line 14,000 L



"Gigant" axle assembly for MAXX Line 16,000 L



"Gigant Plus" axle assembly starting from MAXX Line 18,000 L



Tyres up to 26.5" possible



Blind flange as standard Front right, left and rear



Ball head K80

Versatile and robust

Standard equipment Optional

# Vacuum or pump tank “MAXX Line Plus”

Volume: 14,000 L to 18,000 L

- + Available with 23 t or 24 t permitted total weight



Hydraulic forced steering

Vacuum/pump tank MAXX Line Plus

Tank length (shell)

Tank diameter

VFW/PFW 14,000	6,000 mm	1,700 mm
VFW/PFW 16,000	6,000 mm	1,800 mm
VFW/PFW 18,000	6,000 mm	1,900 mm

## OPTIONAL FOR PFW/VFW

- Four-point hydraulics
- Discharge accelerator with shredding cutter
- 5 or 6 way control blocks



## “MAXX Line Plus” pump tank

Push cover  
700 mm x 700 mm

For vacuum tank:  
Turbo filler at centre under tank



“Gigant” axle assembly for  
MAXX Line Plus 14,000 L



“Gigant Plus” axle assembly for  
MAXX Line Plus 16,000 L and 18,000 L



Wheel arch and tyres  
Tyres 750/60-R30.5\*  
Optional: Rear tyres 750/60-R30.5\*  
Front tyres 850/50-R30.5



Steered



Straight-ahead travel

Steering axle  
A BPW axle in the 410 x 180 mm  
brake drum version is mounted as  
standard for all MAXX Line Plus  
tanks

Ball head K 80

Standard equipment Optional



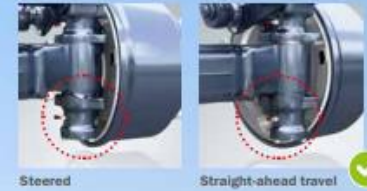
Top-class equipment – for high impact

# Vacuum or pump tank "Alpha Line"

Volume: 10,600 l to 28,000 l

With maximum operating comfort and the very latest technology for professional and intensive applications

Steering axle  
A BPW axle in the 410 x 180 mm brake drum version is mounted as standard for all Alpha Line Plus tanks



- OPTIONAL FOR PFW/VFW**
- Four-point hydraulics
  - Discharge accelerator with shredding cutter
  - 5 or 6 way control blocks
  - For vacuum tanks: Turbo filler at centre under tank
  - Fliegl "SlurryTanker"
  - "ManureSensing" nutrient measurement

Tyres for one-axle tankers up to 1050/50-R32 max.



## Hydraulically shifted axle assembly



Optimal adaptation of drawbar load by mechanical axle shift (standard equipment) or hydraulic stepless adjustment (optional). Also for attaching slurry spreaders, such as a drag shoe spreader



Axles are displaced backward for field application  
High drawbar load = more traction by the tractor



Axles are displaced forward for road application  
Less drawbar load = greater ride comfort and less wear



Telescopic axle (only possible with Boogie SB floating assembly)

Drawbar suspension

✓ Standard equipment    ● Optional

Alpha Line	Axles	Tank length (shell)	Tank Ø
VFW/PFW 10,600	1	5,000 mm	1,600 mm
VFW/PFW 12,000	1	5,000 mm	1,700 mm
VFW/PFW 14,000	1	5,000 mm	1,900 mm
VFW/PFW 14,000	2	6,000 mm	1,700 mm
VFW/PFW 16,000	2	6,500 mm	1,800 mm
VFW/PFW 18,000	2	7,000 mm	1,900 mm
VFW/PFW 20,000	2	7,000 mm	1,900 mm
VFW/PFW 23,000	3	7,450 mm	2,000 mm
VFW/PFW 25,000	3	7,450 mm	2,100 mm
VFW/PFW 28,000	3	7,450 mm	2,150 mm

# CS Line suction tank

Perfect cleaning of the walkway

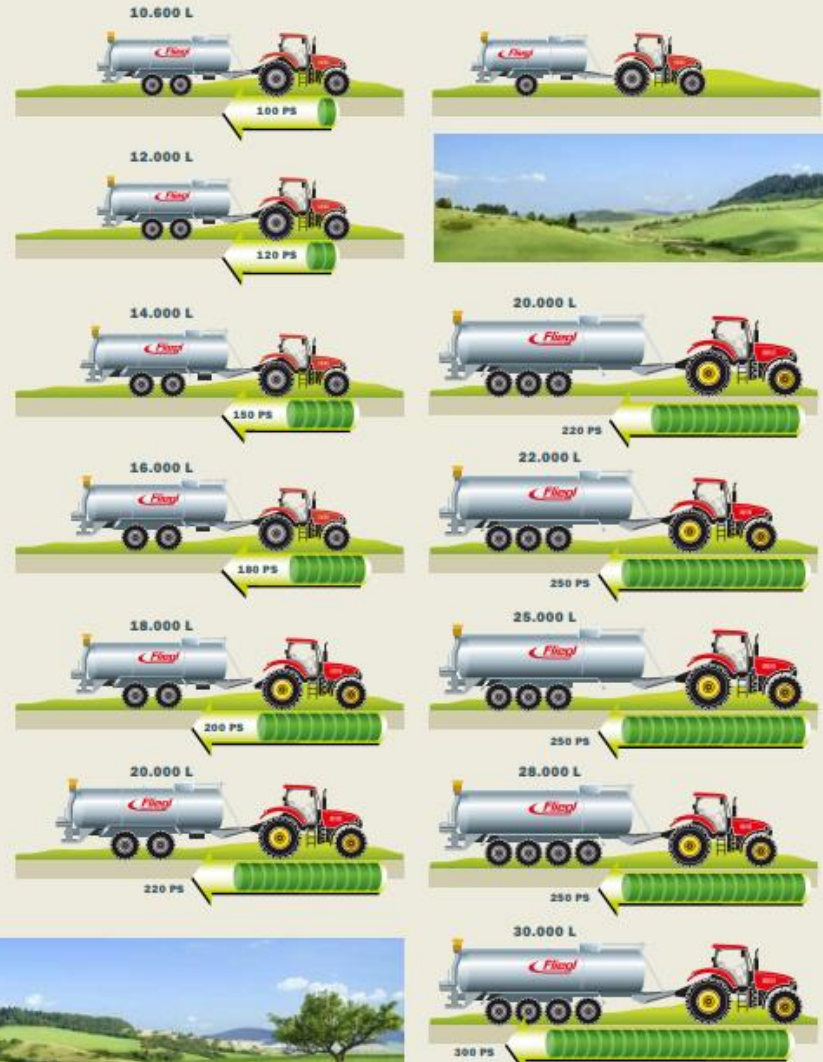


## Stainless steel tanker

- Fliegl stainless steel tanks are guaranteed rustproof!
- Robust self-supporting structure for almost lifelong use
- Substantial weight reduction compared with galvanised steel
- This means up to 1,000 litres more transport volume



Tank sizes and recommended tractor power outputs (depending on application)



# Accessories

With Fliegl accessories, your tanker becomes an effective 'response vehicle' with which you have all factors under control.



Digital flow meter



Control panel for tank control without Skate distributor, up to 6 sections



Control panel for Skate distributor and tank



Drawbar suspension

- More comfortable coupling and uncoupling
- Tank can be completely emptied
- Perfect suspension on the road



Tyre pressure control system for soil-sparing field applications with one/two wire system



Piston compressor with up to 3 m³ air flow rate



Foam separator



Load sensing or constant flow control block



Hydraulic filling dome  
Available sizes: Ø 400 mm and Ø 600 mm  
Opens to right or left depending on mounting



Fixed ladder



Hydraulic bell gate for vacuum tank, robust and impervious to residual matter (ideal for litter manure)



Digital tank meter



Internal pneumatic agitator, possible only in con-Plexigas fill level indicator rection with compressor. Slurry is homogenised



Fill level indicator with float ball



Robust drop support leg



Hydraulic support leg



Three or four point hydraulics



# Filling technology



**Turbo filler with quick coupler (6" or 8")**  
On left, right or rear possible



**Pump tank suction nozzle 8"**



**Turbo filler at centre under tank**  
Suction process possible on right or left



**Suction nozzle (optionally with 8" turbo filler)**  
Possible on left or right.  
With docking station; pressure sequence valve and hydraulic compressor changeover



**Lateral suction boom**  
4500mm length



**Elefant suction nozzle 8"**  
Possible on left or right.  
Length 5000 mm with four-way control block.  
Turbo filler with telescopic extension 1500 optional



## Slurry couplings

All Fliegl tanks are fitted with the "Italian System" as standard.

### THE "ITALIAN" SYSTEM



This system has a **lever welded to the M-piece**. On the **V-piece** is a ball with a **loose clamping ring**. This ring must have a sharp edge where the lever of the M-piece engages. If this edge has been machined to make it round, it is called the "Bazzoli Sieggerle" system.  
To determine the size of the Italian coupling, measure either the outside diameter of the V-piece or the inside diameter of the M-piece. The outside diameter of the V-piece or the inside diameter of the M-piece must be the same for the M-piece and the V-piece. The coupling hose connector is measured by the outside or inside hose diameter.

**Sizes of the Italian system**  
**M-piece (with O-ring)**  
inside dim. A 131 mm - 4"  
inside dim. A 151 mm - 5"  
inside dim. A 181 mm - 6"  
inside dim. A 245 mm - 8"  
inside dim. A 301 mm - 10"  
inside dim. A 371 mm - 12"

**V-piece (with loose clamping ring)**  
outside dim. B 130 mm / inside dim. A 100 mm - 4"  
outside dim. B 150 mm / inside dim. A 120 mm - 5"  
outside dim. B 180 mm / inside dim. A 150 mm - 6"  
outside dim. B 240 mm / inside dim. A 205 mm - 8"  
outside dim. B 300 mm / inside dim. A 254 mm - 10"  
outside dim. B 370 mm / inside dim. A 304 mm - 12"

**Hose sizes**  
4" = 100 mm  
5" = 120 mm  
6" = 150 mm  
8" = 200 mm  
10" = 250 mm  
12" = 300 mm



**Quick coupler 6"**



### THE "PERROT" SYSTEM



This system has a **movable ring on the M-piece** to which the levers are attached. The **V-piece** has a tapered section and is made of one part only. To determine the size of the Perrot coupling, measure either the outside diameter of the V-piece or the inside diameter of the M-piece. The coupling hose connector is measured by the outside or inside hose diameter.

**Sizes of the Perrot system**  
**M-piece (with O-ring)**  
inside dim. A 150.0 mm - 4"  
inside dim. A 171.5 mm - 5"  
inside dim. A 203.5 mm - 6"  
inside dim. A 288.0 mm - 8"

**Perrot V-piece**  
outside dim. B 155 mm / inside dim. A 108 mm - 4"  
outside dim. B 179 mm / inside dim. A 133 mm - 5"  
outside dim. B 211 mm / inside dim. A 159 mm - 6"  
outside dim. B 313 mm / inside dim. A 216 mm - 8"

**Hose sizes**  
4" = 108 mm  
5" = 133 mm  
6" = 159 mm  
8" = 216 mm



**Perrot quick coupler 6"**







+ Invincible against foreign objects | No clogging

+ Uniform longitudinal and cross spreading – even on slopes

**The patented screw distributor is not normal, it's brilliant**

The Fliegl proprietary system for ground-level slurry spreading has benefits for agriculture and the environment: it sharply reduces ammonia and odour emissions and the risk of water contamination. It also increases spreading accuracy and therefore substantially improves nitrogen efficiency.

**Cross-section of spreader attachment**



Oil motor for screw distributor with low wear and long service life. (Required oil quantity 20l max.)



Storage box (with SKATE and GARANT) for foreign objects, emptied mechanically or hydraulically



Storage box emptying for mole harrows, slurry cultivators, and slurry injectors



**Function:** It is not the task of the screw (40 - 60 rpm) to distribute slurry, but to carry any foreign objects outwards into the storage box. A timing relay is set so that the screw runs for about 40 seconds towards the outside and for 5 seconds towards the inside.



Foreign objects such as pieces of wood, stones, ear tags etc. are separated effortlessly out of the system

The Fliegl screw distributor - a unique system!  
for all Fliegl spreading systems that spread at ground level



## “Skate” drag shoe distributor

Optimal for grassland and arable land

		SKATE 90	SKATE 120	SKATE 150	SKATE 180	SKATE 210
Working width	m	9	12	15	18	21
Number of outlets		36	48	60	72	84
Weight	kg	1030	1230	1440	1770	2120
Transport width (top/bottom)	mm	2300/2600	2300/2600	2300/2600	2300/2600	2600/2990
Boom ends with hydr. folding		-	-	-	Optional	Standard



Fliegl pump tank PFW 18,000 with SKATE 150

### Working widths 9 - 21 m

- Solid design but nevertheless low net weight through special frame and distributor construction
- No loss of drawbar load as the drag shoe spreader rests on the ground
- High coulter pressure of 8 kg per injector shoe
- Individual height adjustment of drag shoe spreader possible
- With automatic slope compensation as standard
- Specially tilted swivel joints ensure an extremely slim transport position and therefore good all round vision
- Very narrow transport width of about 2,300mm at the top
- Automatic drip stop as the distributor is swivelled up by comfort control
- Outstanding slurry distribution, low maintenance and low oil requirement (max. 20l) thanks to the **Fliegl screw distributor**
- No kinks on the outlet hoses when folding in/out, thanks to the special folding mechanism
- Sprung injector shoes for optimal ground adaptation
- Mechanical or hydraulic boom section control possible
- Mechanical shut-off of individual hose outlets possible
- Simple mounting directly on the tank possible
- Comfort control with automatic folding and headland function as standard
- Controlled by a tractor control unit (pressureless return required) or by Load Sensing
- Control through Isobus possible
- Narrow hose spacing of 250mm, therefore optimal for grassland and arable land



Fliegl vacuum tank  
VFW 8,500 with SKATE 90

Fliegl pump tank  
Polyline 18,500 with SKATE 210



## Construction and control



- 7° with 12 m working width corresponds to about 1400 mm
- 7° with 15 m working width corresponds to about 1740 mm



### “EASY” comfort control (standard equipment)

- Relieves the driver and prevents operator errors
  - The ergonomic control panel is backlit and can be easily disconnected from the cable by the connector, so it can be left in the tractor
  - Folding of the distributor arms is monitored by sensors at all positions, so the folding is synchronised and dampened even on slopes.
- AUTOMATIC FOLDING**  
**The distributor...**
    - is lifted out of the mechanical transport lock
    - folds the distributor arms backwards
    - is lowered into working position
  - AUTOMATIC SPREADING**
    - Gate slider opens
    - Spreading augers start working
  - AUTOMATIC HEADLAND FUNCTION**
    - Spreading augers switch off
    - Gate slider closes
    - Distributor folds up



EASY comfort control panel

### Control through ISOBUS



ISOBUS adapter cable allows quick changeovers  
Using the ISOBUS adapter, the SKATE can be operated either with the standard EASY comfort control or through an ISOBUS terminal. So it is easy to change between older and newer tractors.

Storage box opens mechanically or hydraulically

Specially tilted swivel joints

Control block

Compact transport width of 2600mm at bottom and 2300mm at top

Extremely low overall height

Angle sensors on left and right for even folding on slopes



Special folding mechanism prevents any kinking of the outlet hoses

Automatic slope compensation for optimal ground adaptation

Hose distance 250mm

Coulters pressure 8kg

Uniform spread quality with short outlet hoses

Integrated overpressure protection

## Accessories...

Boom section control mechanical or hydraulic



Shredding cutter integrated in the Fiegl screw distributor (oil capacity 60l required)



Support wheels



Mechanical shut-off of individual hoses



Hydraulic emptying of storage box



T-piece with manual mechanical slider for an additional output, e.g. for an impact head spreader

...easy retrofit even for tanks from other manufacturers

Included with delivery: drag shoe spreader pre-assembled, control panel and control panel are included.



Retrofit: pay attention to drawbar load and permitted total weight of the tanker



Also suitable for third-party GFK tankers

## “Garant” drag shoe distributor



Storage box to separate foreign objects



Garant 150 loose



Screw conveyor control unit



Pressure sequence valve

### Working width 9 - 18 m

- Slurry is deposited in strips directly on the soil surface
- With the proven Fliegl screw distributor
- Foreign objects are carried automatically into the storage box
- Layout and structure of the frame and distributor arms as on the Fliegl SKATE
- Controlled by two tractor control units (1x for folding mechanism 1x for screw distributor)
- Without control panel
- Required oil capacity 20l max.
- Lowest power requirement

## “Vario-Disc” slurry injector

Patented system for perfect incorporation in grassland and arable land



Stepless disc adjustment



Jagged edge discs for better injection quality



Injection directly into the soil at about 5-10 cm

### Working widths 3.00 m, 6.00 m and 8.00 m

- Grassland and arable land application
- Can be mounted on almost any slurry tank
- With the proven Fliegl screw distributor
- Frame fully galvanised
- Maintenance-friendly
- Hydraulic folding
- Adjustable support wheels
- Sturdy angular contact roller bearings
- Disc diameter 530 mm



Targeted depositing of the slurry under the turf

## “Mole” compact disc harrow

Easy-pull soil cultivation and targeted incorporation of slurry in one operation



Injection directly into the soil at  
about 12 cm



### Working widths 3.00 m, 6.00 m and 7.60m

- With the proven Fiegl screw distributor
- With the large-sized coulter discs, the subsoil is worked over and the slurry incorporated in a single operation
- Hydraulic folding
- Large adjustable support wheels
- Sturdy angular contact roller bearings
- Disc diameter: 510 mm

## “GUG” slurry cultivator

Powerful soil cultivation and targeted incorporation of slurry in a single operation



Injection directly into the soil at  
about 10-20 cm

### Working widths 3.00 m, 4.50 m and 6.00 m

- For uncultivated stubble fields
- Robust cultivator tines for the toughest jobs
- Replaceable double-heart points
- Can be mounted on almost any slurry tank
- With the proven Fiegl screw distributor
- Frame fully galvanised
- Hydraulic folding (for working widths 4.50 m and 6.00 m)
- Maintenance-friendly
- Easy to operate
- Height-adjustable support wheels

# Fliegl Slurry Tanker

## Perfection in slurry spreading



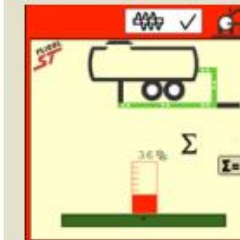
Fliegl Slurry Tanker (FST) is a control system which allows all of the functions of a slurry tanker to be controlled comfortably through an ISOBUS display

### Advantages

- Makes slurry spreading easier
- Increases operator comfort and safety when applying fertilisers.
- The control system uses the existing ISOBUS display and makes it unnecessary to have an additional control panel in the tractor.
- Compatible with any ISOBUS display (has the AEF certificate).
- Since the FST only needs three hoses between tractor and tank, coupling and uncoupling is totally uncomplicated.
- Load-sensing-enabled as standard, i.e. hydraulic functions are always supplied only with the quantity of oil actually required; this not only reduces heating of the oil, but also fuel consumption.

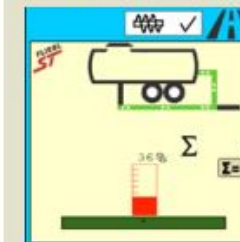
It has three different modes: road, farm and field operation. The reason for this is that only certain functions are available in each mode. For example in farm mode, which is intended for filling operations, the three-way gate slider at the rear cannot be operated. This prevents any undesired operator errors. Field mode may have one or more pages, depending on the number of functions the tank has.

### Farm operating mode



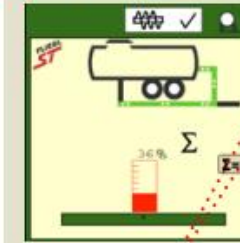
- Mode switching
- Opening and closing of the front slider
- Opening and closing of the dome cover
- Opens and closes the suction arm slider
- Folding the suction arm in and out

### Road operating mode



- Drawbar adjustment for coupling and uncoupling
- Axle shift for regulating the drawbar load

### Field operating mode



- Bring the three-way slider into spreading position. Pump is switched on automatically.
- Opening and closing the front slider
- Folding the distributor in and out; the transport lock is opened and closed automatically
- Drag hoses folding out and in



# Precision spreading

FLIEGL  
FLOW  
CONTROL



Flow Control in combination with flow meter



- 1 Reduce spreading rate
- 2 Increase spreading rate
- 3 "Totals": Information on total amount of slurry spread, duration, etc.
- 4 Main page
- 5 Settings
- 6 Diagnostics
- 7 Start / Stop
- 8 Help
- 9 Increase flow rate
- 10 Reduce flow rate
- 11 Enter the desired spreading rate
- 12 Green: current spreading rate  
Red: desired spreading rate
- 13 Target speed calculated to maintain desired spreading rate
- 14 Current travel speed
- 15 Left element coloured = drive faster  
Left element coloured = drive slower
- 16 Set the desired flow rate
- 17 Current flow rate

## Fliegl Flow Control

### FFC without variable speed pump

On the version without variable speed pump, you can easily set the spreading rate in  $m^3/ha$ . The optimal speed to obtain the desired spreading rate is calculated and displayed. This version is therefore suitable mainly for flatland areas.

### FFC with bypass system (for pump tank only)

If the engine is operating at full capacity and the recommended speed can no longer be obtained when going uphill, the PTO speed must be reduced to avoid excess fertiliser application. With the new bypass system from Fliegl, manure is simply re-directed from the feed line back into the tank. This means there is less manure at the dribble bar and excess application is avoided. The bypass is controlled automatically by the system as required.

### FFC with controlled discharge acceleration (for vacuum tank only)

With this system the tank is emptied by a discharge accelerator. This is operated by a separate oil motor independently of PTO speed. As well as setting the spreading rate in  $m^3/ha$ , you can also adjust the spreading rate in  $m^3/min$ . If the diesel engine is running at full capacity when going uphill, then the calculated optimal travel speed can no longer be obtained. So you can reduce the flow rate per minute and the optimal travel speed for this flow rate is recalculated. In this way you can also obtain an even spread pattern when going uphill.

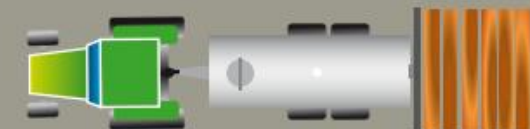
### Control by travel speed

Automatic speed control according to flow rate and selected spreading rate by Isobus Class 3 functionality (only possible with certain tractor manufacturers).

## Uniform spreading result with Fliegl Flow Control



Travel speed control with FFC



With conventional rotary vane control

# Other spreading systems



Impact head, pendulum, or nozzle boom spreaders: in addition to ground level injection systems, we also offer classic spreading systems such as impact head/wide area or combi-spreaders.

Pendulum spreader for coarse droplet application



Wide area spreader



Combi-spreeder - folding  
Follow the national regulations on the use of fertilisers



Hydraulic pendulum spreader with working width from 12 to 18 m.



Hydraulic double pendulum spreader



Nozzle boom spreader with maximum working width 21 - 30 m

# Fliegl slurry hose system

## Soil-saving slurry application



- + Slurry application which is very gentle on the soil
- + Slurry application even in extremely wet weather and on marshy ground
- + Perfect system for steep lateral slopes



+ No problems getting in or out of the cab



+ Robust tow bar with integrated head-land mode (tow bar turns at the headland)



Fliegl SKATE 150

- Slurry hose system possible with the Fliegl SKATE drag shoe spreader, GARANT drag hose spreader, and the VARIO DISC slurry injector.
- Pressure required in the slurry feed line about 10-12 bar

Dimensions at the K50 ball head coupling and clearances must meet standards ISO 500 and ISO 730.

Steering cylinders are mounted at the same axial and vertical level as the ball head coupling on the towing vehicle. Spacing 250 mm (+/- 5mm)

Simple coupling - as standard

Open the locking pin at the forced steering cylinder

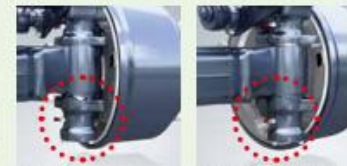
Simply attach the K50 coupling to the tractor

Fix the locking pin

Forced steering with hydraulic control



### Hydraulic forced steering



Steered

Straight-ahead travel

#### Optional: BPW axle

BPW steering axle with undulated thrust bearings. These hold the wheel in the straight position for straight-ahead travel and, when turning, the lateral forces on the tyre push the thrust washers one over the other. When the turning manoeuvre is complete, the vehicle weight automatically brings these back to the straight-ahead position.



# Chassis technology

For secure handling, even in extreme driving situations!

## The Fliegl swap system

Slurry tank superstructure optional for swap chassis.



Cylinder for hydraulic lifting gear



Drawbar with swiveling eye 51mm



Ball head K80



Rotating drawbar eye 50mm



Piton-Fix



DIN drawbar eye D40



Titan tandem assembly for best ground adaptation



Air suspension



Optimal adaptation of drawbar load by mechanical axle shift (standard equipment) or hydraulic stepless adjustment (optional). Also for attaching slurry spreaders, such as a drag shoe spreader



Axles are displaced backward for field application  
High drawbar load = more traction by the tractor



Axles are displaced forward for road application  
Less drawbar load = greater ride comfort and less wear



TitanPlus



Hydraulic axle suspension



Boog floating assembly, rigid



"Gigant"



"Gigant Plus"

Fliegl tank and load counter

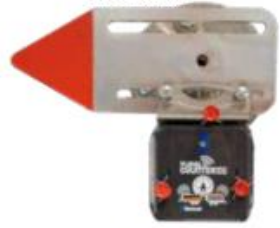
# “Beacon Counter HD”

**FLIEGL**  
**COUNTER**



**FLIEGL**  
**COUNTER**

Illustration with Fliegl Beacon Counter



Example with the beacon mounted at the tank fill level indicator



Beacons are paradoxical: They are small, simple and cost-effective, but at the same time they are rather brilliant. The inconspicuous-looking transmitters are based on simple Bluetooth technology and, when used intelligently, open up whole new possibilities for data acquisition. Fliegl set up its new tank counter as a beacon which can count and store in memory - tank metering has never before been so simple, accurate,

wireless and maintenance-free. At the heart of the Fliegl tank counter is a beacon which is mounted at the pivot point of a float in the slurry tank. If the tank is being filled, the beacon registers the filling at an upper measurement point. If the tank is being emptied, the beacon registers the emptying at a lower measurement point. One filling and one emptying is counted as one tank load.



Example with the beacon mounted on a round baler



Example with the beacon mounted on a bale fork

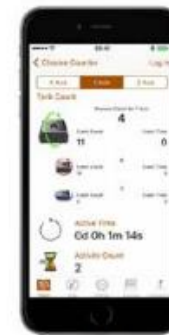


Bluetooth

Works with

## Apps “for BEACON Counter HD”

The beacon monitoring app - the beacon extends the already numerous possible applications of a smartphone. With this app you can read off all the data stored by the beacon.



iOS



Android



